



Glync
For Brighter Earth

OUR PRODUCT RANGE

Warranty: 2 Years



ROYAL DIONE - Bulb

Wattage (W) : 3, 5, 7, 9, 12

CCT (K) : 3000, 6500

MRP (₹) : 340, 609, 704, 836, 874



DIONE - Bulb

Wattage (W) : 3, 5, 8, 10, 13

CCT (K) : 3000, 6500

MRP (₹) : 212, 296, 321, 394, 504



GLOBE - Night Bulb

Wattage (W) : 0.5

CCT (K) : Blue, Red, Yellow, Green

MRP (₹) : 75 **Warranty: 1 year**



FLASH - Bulbs (MR16 & GU10)

Wattage (W) : 3, 5, 7

CCT (K) : 3000, 6500

MRP (₹) : 613, 788, 831

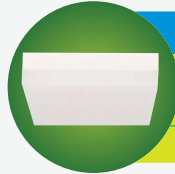


FLAME - Candle Bulb

Wattage (W) : 3

CCT (K) : 3000, 4000, 6500

MRP (₹) : 300



GLAZE - Surface Ceiling Light

Wattage (W) : 12, 18, 24

CCT (K) : 3000, 4000, 6500

MRP (₹) : 1500, 2400, 3006



Crystal Round Spot Light 1001

Wattage (W) : 3

CCT (K) : 3000, 6500

MRP (₹) : 582



Crystal Square Spot Light

Wattage (W) : 3

CCT (K) : 3000, 6500

MRP (₹) : 582



Jet Spot Light

Wattage (W) : 3

CCT (K) : 3000, 6500

MRP (₹) : 372



Spark Round Spot Light

Wattage (W) : 3

CCT (K) : 3000, 6500

MRP (₹) : 372

GLYNC ISO 9001: 2008 CERTIFIED

www.glyncled.com



Glync
For Brighter Earth

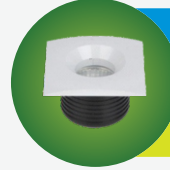
OUR PRODUCT RANGE

Warranty: 2 Years



GLITZ - Recessed Ceiling Light

Wattage (W) : 8, 10, 13
CCT (K) : 3000, 4000, 6500
MRP (₹) : 1178, 1417, 2082



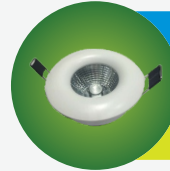
Spark Square Spot Light

Wattage (W) : 3
CCT (K) : 3000, 6500
MRP (₹) : 372



Laser Square Spot Light

Wattage (W) : 5
CCT (K) : 3000, 6500
MRP (₹) : 1200



Laser Round Spot Light

Wattage (W) : 5
CCT (K) : 3000, 6500
MRP (₹) : 1200



Bullet Square Spot Light

Wattage (W) : 3
CCT (K) : 3000, 6500
MRP (₹) : 582



Bullet Round Spot Light

Wattage (W) : 3
CCT (K) : 3000, 6500
MRP (₹) : 582



CRYSTAL BELLA - Down Light

Wattage (W) : 3, 5, 7, 10, 15
CCT (K) : 3000, 4000, 6500
MRP (₹) : 551, 931, 1298, 2046, 2400



BLAZE Downlight

Wattage (W) : 5, 10, 20, 30
CCT (K) : 3000, 6500
MRP (₹) 1262, 1724, 3455, 4156



FLARE DownLight

Wattage (W) : 7, 20, 30
CCT (K) : 3000, 6500
MRP (₹) : 1295, 3386, 4627



BEAM PLASTIC Downlight - PLAIN

Wattage (W) : 5, 7
CCT (K) : 3000, 4000, 6500
MRP (₹) 475, 525



BEAM PLASTIC Downlight - GOLD/SILVER

Wattage (W) : 5, 7
CCT (K) : 3000, 4000, 6500
MRP (₹) 550, 600



Glync
For Brighter Earth

OUR PRODUCT RANGE

Warranty: 2 Years



TURBO Track Light

Wattage (W) : 20, 30, 40

CCT (K) : 3000, 4000, 6500

MRP (₹) : 4856, 6668, 7125



STREAK Track Light

Wattage (W) : 10, 20, 30

CCT (K) : 3000, 4000, 6500

MRP (₹) : 2363, 4856, 6668



DUPLX Convertible Flood-Street Light

Wattage (W) : 36 Street, 42 Flood

CCT (K) : 3000, 4000, 6500

MRP (₹) : 6500, 7000

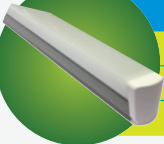


SPRITZ Surface Spot Light

Wattage (W) : 12

CCT (K) : 3000, 4000, 6500

MRP (₹) : 2750

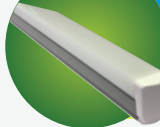


PENCIL - Aluminium Casted Tubelight

Wattage (W) : 10, 20

CCT (K) : 3000, 4000, 6500

MRP (₹) : 1067, 1192



PENCIL - Plastic Tubelight

Wattage (W) : 10, 20

CCT (K) : 3000, 4000, 6500

MRP (₹) : 965, 1090

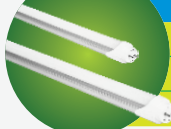


ARIEL - Aluminium Casted Tubelight

Wattage (W) : 10, 20

CCT (K) : 3000, 4000, 6500

MRP (₹) : 1000, 1125



ELLEN - Tube Only

Wattage (W) : 20

CCT (K) : 3000, 4000, 6500

MRP (₹) : 1135



BLADE TUBE LIGHT

Wattage (W) : 10, 20, 40

CCT (K) : 3000, 4000, 6500

MRP (₹) : 850, 1625, 3100



RHEA PL LIGHT

Wattage (W) : 18

CCT (K) : 3000, 4000, 6500

MRP (₹) : 1300



RODEO - Street Light

Wattage (W) : 24, 36, 45, 60, 80, 100, 120, 150

CCT (K) : 3000, 6500

MRP (₹) : 3300, 4950, 6188, 8250, 11000,
13750, 16500, 20625



BEACON - Zoom Light

Wattage (W) : 15, 30, 40

CCT (K) : 3000, 4000, 6500

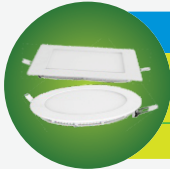
MRP (₹) : 5143, 6858, 8571



Glync
For Brighter Earth

OUR PRODUCT RANGE

Warranty: 2 Years



EUROPA - Slim Panel

Wattage (W) : 3, 6, 12, 15, 18, 24

CCT (K) : 3000, 4000, 6500

MRP (₹) : 510, 705, 1110, 1365, 1530, 2700



BENZ - Surface Panel

Wattage (W) : 6, 12, 18, 24

CCT (K) : 3000, 4000, 6500

MRP (₹) : 880, 1285, 1705, 2850



EUROPA DISC - Ultra Slim Panel

Wattage (W) : 8, 16, 22

CCT (K) : 3000, 4000, 6500

MRP (₹) : 1000, 1357, 2357



BENZ DISC - Ultra Slim Surface Panel

Wattage (W) : 8, 16, 22

CCT (K) : 3000, 4000, 6500

MRP (₹) : 1142, 1500, 2500



IRIS - Panel Downlight

Wattage (W) : 6, 12, 18

CCT (K) : 3000, 6500

MRP (₹) : 755, 1160, 1580



TITAN - Flood Lights

Wattage (W) : 30, 50, 100

CCT (K) : 3000, 6500

MRP (₹) : 3656, 5775, 10160

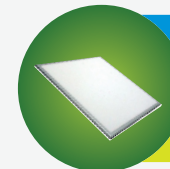


CALLISTO - Back Lit Panel 2x2 & 4x1

Wattage (W) : 38, 48

CCT (K) : 3000, 6500

MRP (₹) : 5500, 6000



STELLA - Slim Panel 2x2 & 4x1

Wattage (W) : 36, 48

CCT (K) : 3000, 6500

MRP (₹) : 6000, 6500



OBERON - HighBay Light

Wattage (W) : 30, 50, 80, 100, 120, 150, 200

CCT (K) : 3000, 6500

MRP (₹) : 17325, 23100, 25988, 31763, 34650, 38981, 43313



ATOM - Strip Lights (IP-20 & IP-65)

Types: IP20, IP65 | Light Source: 2835, 5050, RGB

Colour: Red, Green, Blue, RGB, Cool White, Warm White, Neutral White

MRP (₹) : On Request

Corporate Office: Bldg. No. 62-63, Skipper House, Flat No. 201
2nd Floor, Nehru Place, New Delhi 110019 Tel.: 011 41602961 | Mob: 8287000700

GLYNC ISO 9001: 2008 CERTIFIED
www.glyncled.com